

Drug Status Report

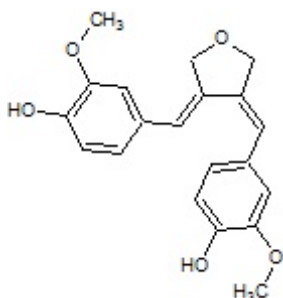
Drug: Activate Extreme
Manufacturer: Designer Supplements

Drug Name Status: Activate Extreme is the trade name.

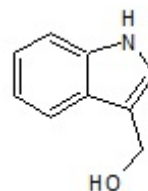
Ingredients:

Divanillyltetrahydrofuran- I
Rhodiola Rosea- II
Icariin- III
Indole-3-carbinol- IV
Basella Alba- V

Chemical structure:



I



IV

Molecular Formula: I-C₂₀H₂₀O₅; IV-C₉H₉NO

Canadian Status: Divanillyltetrahydrofuran is obtained from an extract of the stinging nettle plant. Rhodiola Rosea also known as goldenroot is a plant for which several claims have been made including the treatment of depression and an anti-aging agent. Icariin is a flavonol found in horny goat weed a common ingredient in dietary supplements. Indole-3-carbinol may be derived from eating cruciferous vegetables. Basella Alba is a vine the leaves and roots of which are consumed as food in China and Africa.

Recommendation: The ingredients in Activate Extreme are not included in the schedules CDSA; Activate Extreme is not a controlled substance.

January 3, 2008